

Instructions for assembling the ChordMap Cylinder

Print out the Faceplate and the Chord Strip on cardstock

Cut off top of faceplate on line

Cut out windows on the faceplate

If desired tape over both sides of the windows

Or laminate

Overlay faceplate on strip; trim both pieces so that

Trim the bottom of one or both so the windows align

Trim the chord strip to desired height above faceplate

It must protrude enough to hold with your fingers
while you rotate the outer tube

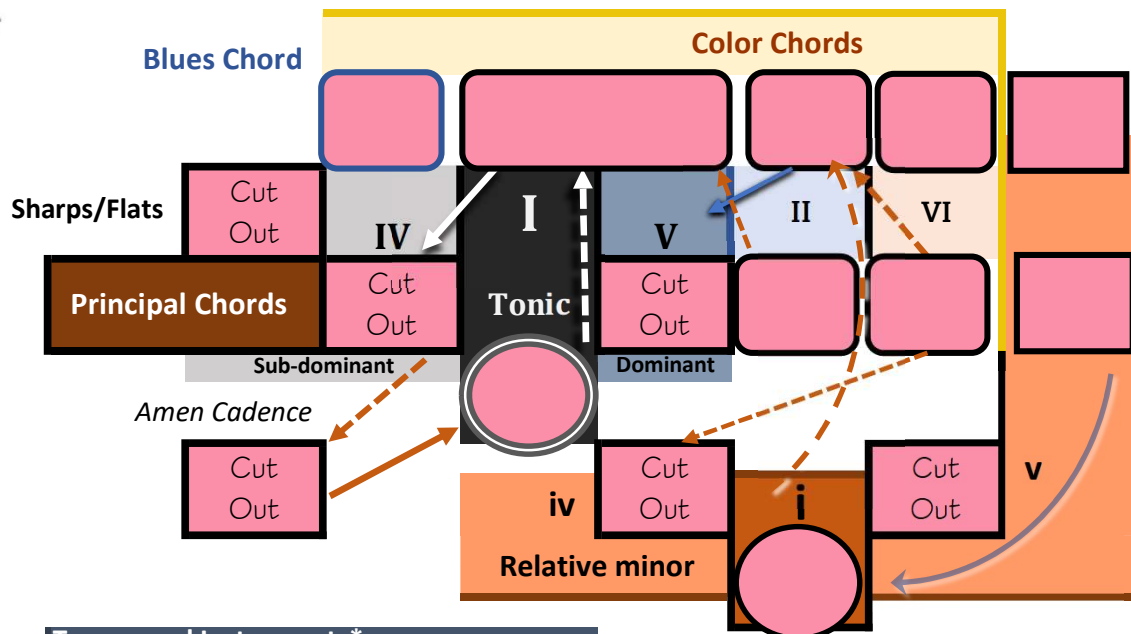
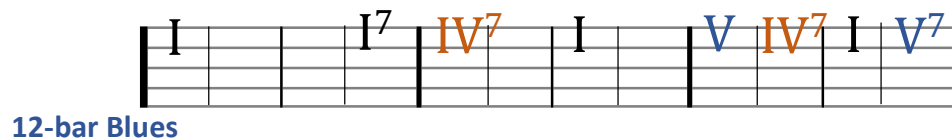
Roll the chord strip into a tube so the F and C align

Overlap the ends or trim and connect the edges with a butt joint

Tape or glue the ends of the strip

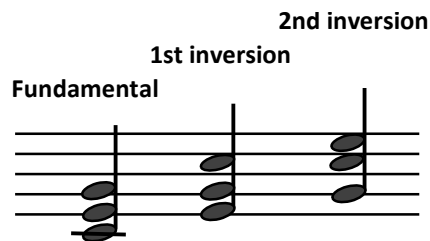
Roll the faceplate around the chord strip at the desired tightness

Trim the length of the faceplate as desired and secure that outer tube
using tape or glue



Transposed Instruments*

E \flat	B \flat	F
Cut out		
French Horn	Trumpet	Alto Sax
	Tenor Sax	
	Clarinet	



*Concert key, Chart Tonic is Instrument notation



Gb7 F#7	Db7 C#7	Ab7	Eb7	Bb7	F7	C7	G7	D7	A7	E7	B7
------------	------------	-----	-----	-----	----	----	----	----	----	----	----

4b 3b 2b 1b 1# 2# 3# 4# 5# 6#/6b 5b

Gb Db Ab Eb Bb F C G D A E B
F# C#

Gb F#	Db C#	Ab	Eb	Bb	F	C	G	D	A	E	B
----------	----------	----	----	----	---	---	---	---	---	---	---

Dbm Abm Eb Bbm Fm Cm Gm Dm Am Em Bm Gbm
C#m F#m

Dbm C#m	Abm	Fm	Bbm	Fm	Cm	Gm	Dm	Am	Em	Bm	Gbm F#m
------------	-----	----	-----	----	----	----	----	----	----	----	------------

Relative minor

				Eb	Bb	F					
B	Gb F#	Db C#	Ab	Eb	Bb	F	C	G	D	A	E

