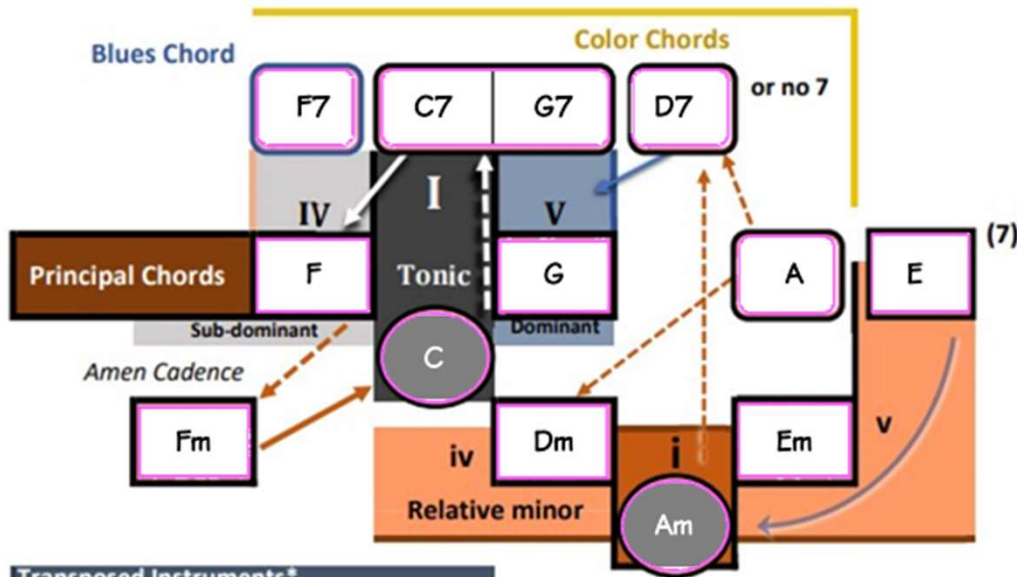
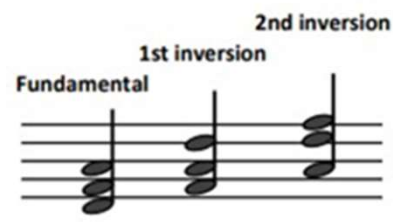


12-bar Blues



**Transposed Instruments\***

E♭	B♭	F
E♭	B♭	F
Alto Sax	Trumpet	French Horn
	Tenor Sax	Horn
	Clarinet	



\*Concert key, Tonic is instrument notation

G♭7 F♯7	D♭7 C♯7	A♭7	E♭7	B♭7	F7
------------	------------	-----	-----	-----	----

G♭ F♯	D♭ C♯	A♭	E♭	B♭	F
G♭ F♯	D♭ C♯	A♭	E♭	B♭	F
D♭m C♯m	A♭m	E♭m	B♭m	Fm	Cm
D♭m C♯m	A♭m	E♭m	B♭m	Fm	Cm

B	G♭ F♯	D♭ C♯	A♭	E♭	B♭
---	----------	----------	----	----	----

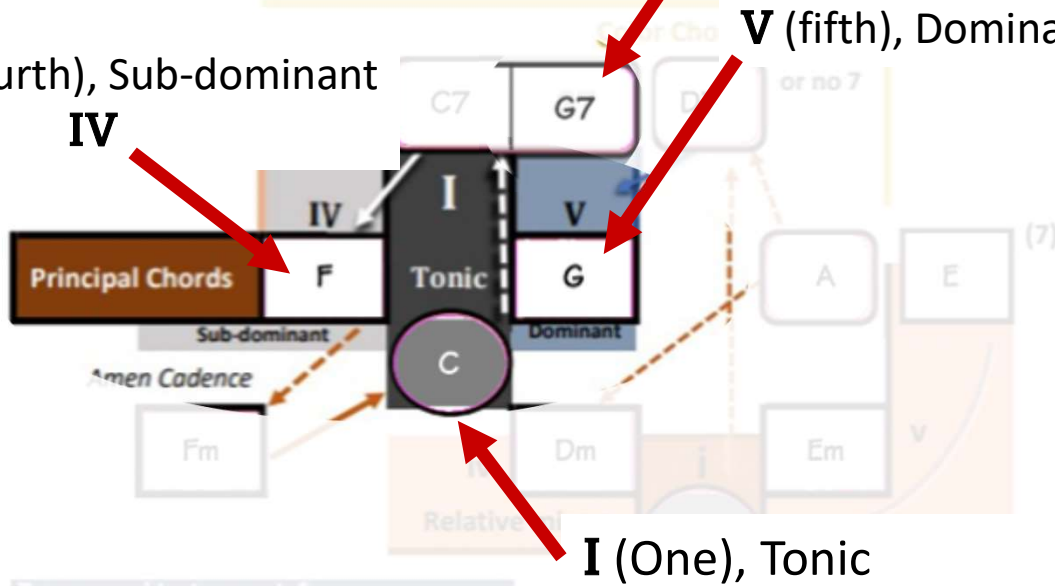
# Principal Chords Major

Dominant 7<sup>th</sup>, typically used to transition to I  
**V<sup>7</sup>**



(fourth), Sub-dominant  
**IV**

**V** (fifth), Dominant



Transposed Instruments\*

E $\flat$	B $\flat$	F
E $\flat$	B $\flat$	F
Alto Sax	Trumpet	French Horn
	Tenor Sax	
	Clarinet	

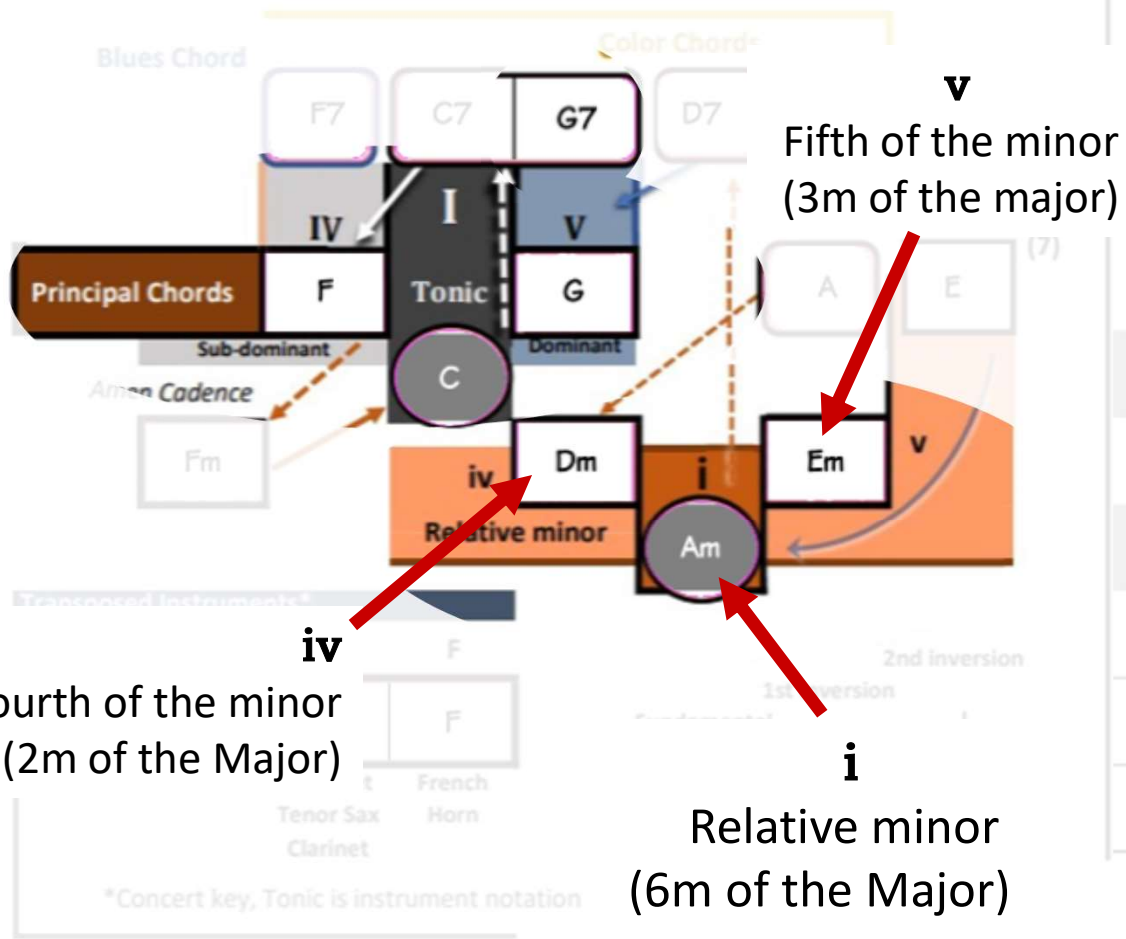
\*Concert key, Tonic is instrument notation



G $\flat$ 7 F $\sharp$ 7	D $\flat$ 7 C $\sharp$ 7	A $\flat$ 7	E $\flat$ 7	B $\flat$ 7	F
G $\flat$ F $\sharp$	D $\flat$ C $\sharp$	A $\flat$	E $\flat$	B $\flat$	
D $\flat$ m C $\sharp$ m	A $\flat$ m	E $\flat$ m	B $\flat$ m	Fm	C
D $\flat$ m C $\sharp$ m	A $\flat$ m	E $\flat$ m	B $\flat$ m	Fm	C
B	G $\flat$ F $\sharp$	D $\flat$ C $\sharp$	A $\flat$	E $\flat$	F

# Principal Chords

## Major and minor



Gb7	Db7	Ab7	Eb7	Bb7	F7
F#7	C#7				

Gb	Db	Ab	Eb	Bb	F
F#	C#				

Gb	Db	Ab	Eb	Bb	F
F#	C#				

Dbm	Abm	Ebm	Bbm	Fm	C
C#m					

Dbm	Abm	Ebm	Bbm	Fm	C
C#m					

B	Gb	Db	Ab	Eb	F
F#	C#				

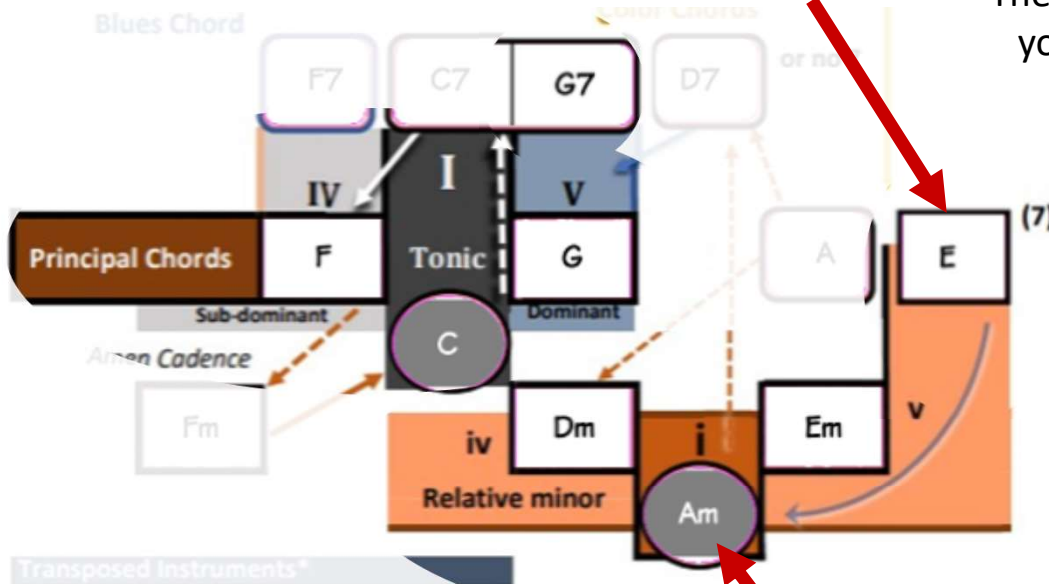
# Principal Chords

## Major and minor

### Harmonic 5th



12-bar Blues



**v**  
Harmonic minor v  
(III of the major)

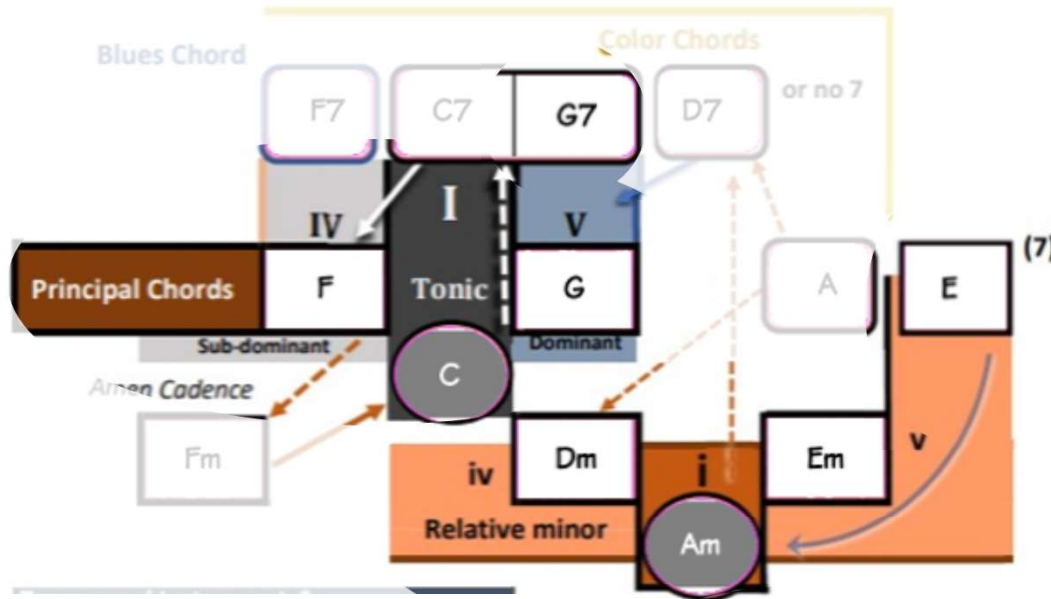
Also use the 7<sup>th</sup>  
The same way  
you use **V<sup>7</sup>**

The harmonic minor chord introduces the natural 7<sup>th</sup> of the root of the minor  
This gives a more transitional feel, like a dominant chord

**i**  
Relative minor  
(6m of the Major)

- Concert key, tonic is instrument notation

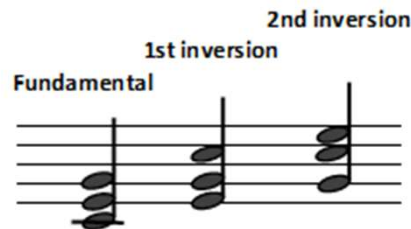
# Chord Inversions



Triads (3-note chords) with a base note other than the chord root are called inversions

Not building on the root gives the chord a more transitional feel

\*Concert key, Tonic is instrument notation



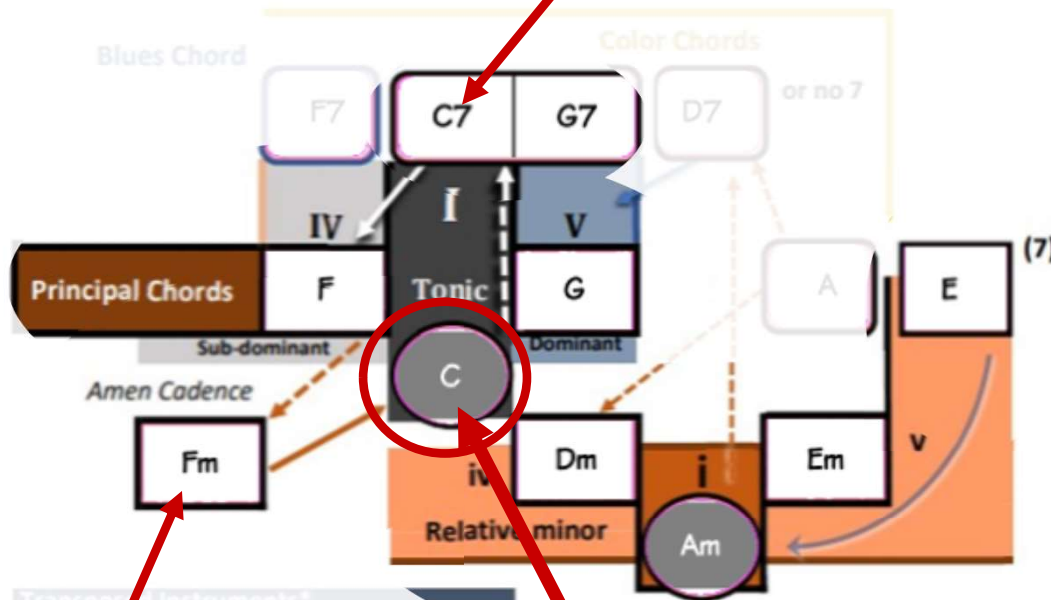
These three chords are the same chord, just arranged differently

A "C" chord is shown, but the pattern is the same for all chords

Gb7 F#7	Db7 C#7	Ab7	Eb7	Bb7	F7
Gb F#	Db C#	Ab	Eb	Bb	F
Gb F#	Db C#	Ab	Eb	Bb	F
Dbm C#m	Abm	Ebm	Bbm	Fm	C
Dbm C#m	Abm	Ebm	Bbm	Fm	C
B	Gb F#	Db C#	Ab	Eb	F

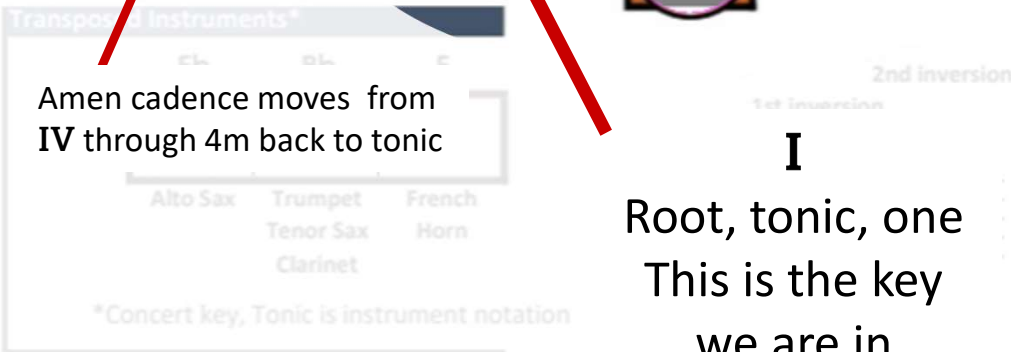
# Color Chords

## I<sup>7</sup> and Amen cadence



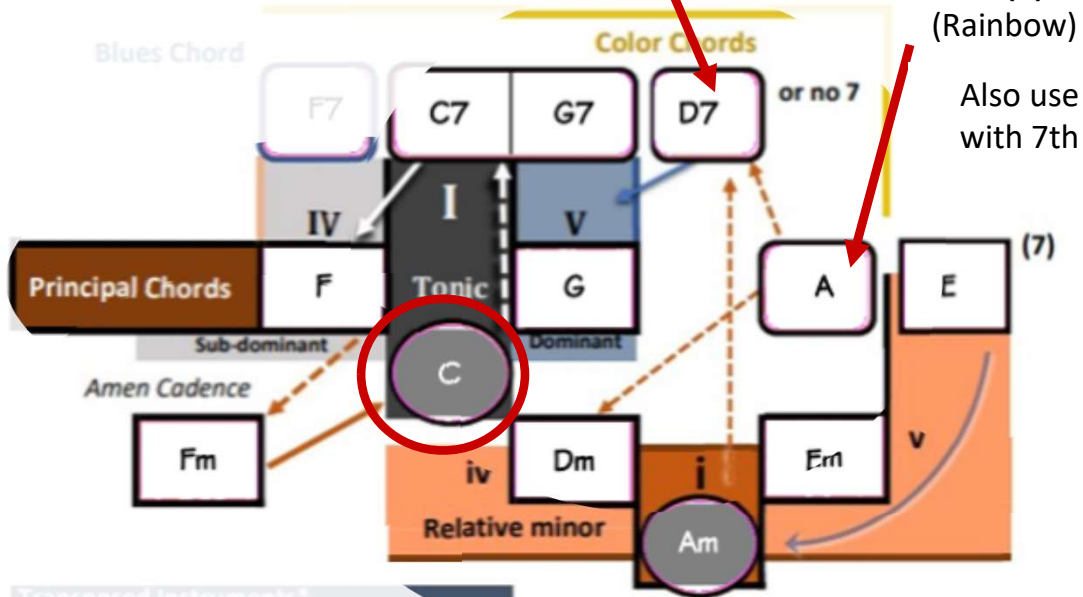
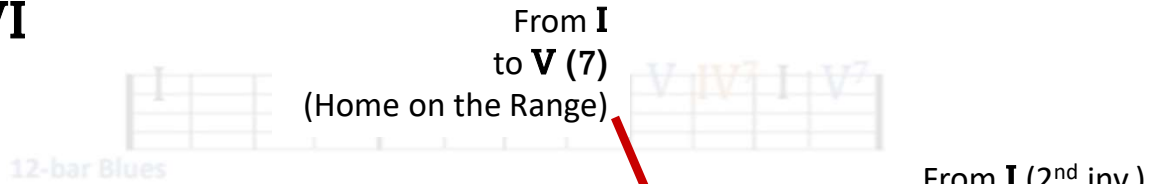
Amen cadence moves from IV through 4m back to tonic

**I**  
Root, tonic, one  
This is the key  
we are in



G♭7 F#7	D♭7 C#7	A♭7	E♭7	B♭7	F7
G♭	D♭	A♭	E♭	B♭	F
G♭	D♭	A♭	E♭	B♭	F
D♭m C#m	A♭m	E♭m	B♭m	Fm	C
D♭m C#m	A♭m	E♭m	B♭m	Fm	C
B	G♭ F#	D♭ C#	A♭	E♭	F

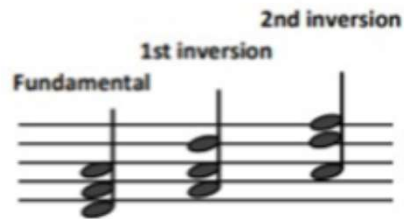
# Color Chords II and VI



The 6<sup>th</sup> transition feels like a more "bulky" form of the relative minor



\*Concert key, Tonic is instrument notation



Gb7	Db7	Ab7	Eb7	Bb7	F7
F#7	C#7				

Gb	Db	Ab	Eb	Bb	F
F#	C#				

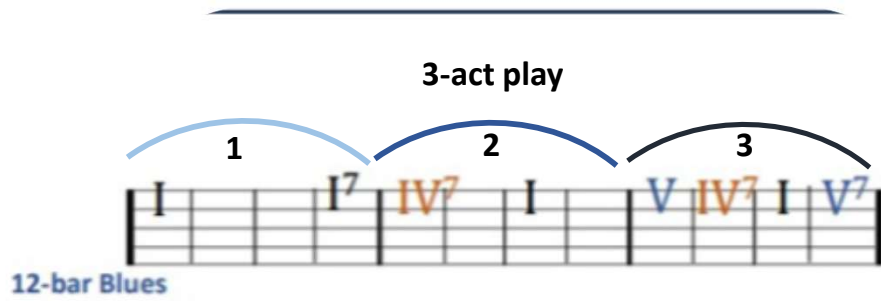
Gb	Db	Ab	Eb	Bb	F
F#	C#				

Dbm	Abm	Ebm	Bbm	Fm	C
C#m					

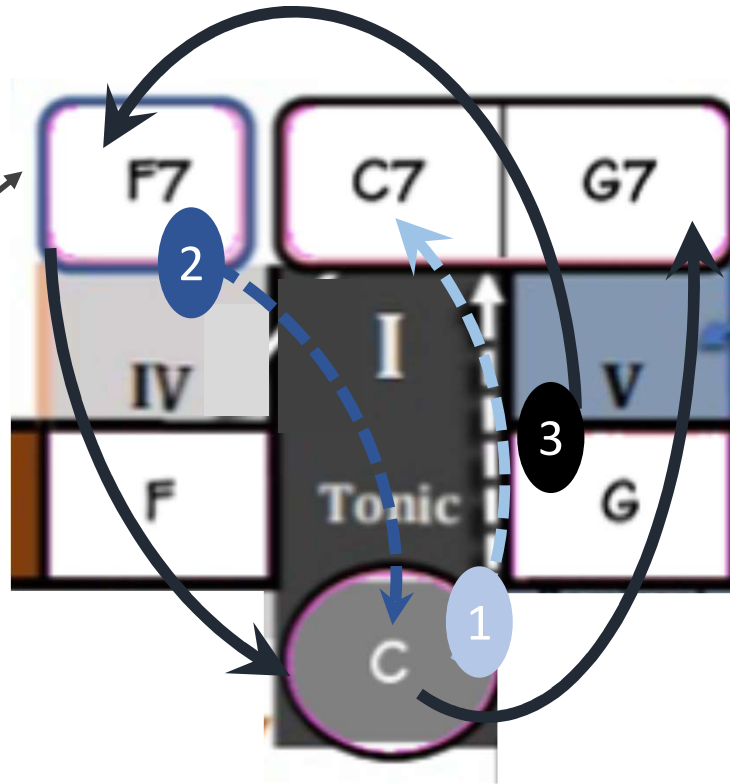
Dbm	Abm	Ebm	Bbm	Fm	C
C#m					

B	Gb	Db	Ab	Eb	F
	F#	C#			

# Blues

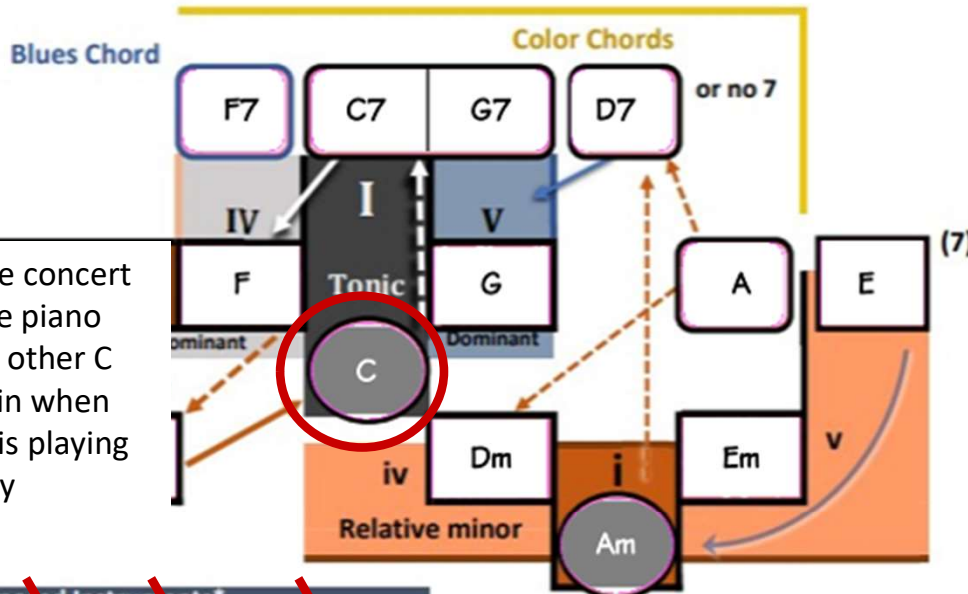
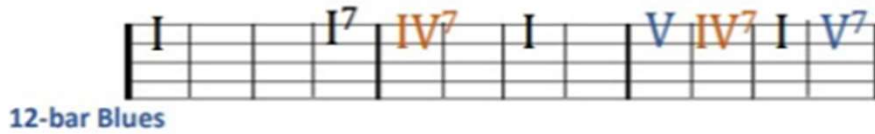


Blues chord can be used in place of the 4<sup>th</sup> for a Jazzy sound (Like 12-bar blues)





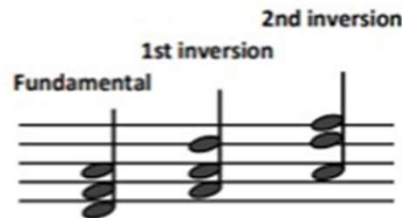
# Transposing Instruments



Key shown is the concert key-- the key the piano (or orchestra or other C instruments) is in when the instrument is playing in the circled key

Transposed Instruments*		
E♭	B♭	F
E♭	B♭	F
Alto Sax	Trumpet	French Horn
	Tenor Sax	
	Clarinet	

\*Concert key, Tonic is instrument notation



G♭7 F#7	D♭7 C#7	A♭7	E♭7	B♭7	F
G♭	D♭	A♭	E♭	B♭	F
G♭	D♭	A♭	E♭	B♭	F
D♭m C#m	A♭m	E♭m	B♭m	Fm	C
D♭m C#m	A♭m	E♭m	B♭m	Fm	C
B	G♭ F#	D♭ C#	A♭	E♭	F